

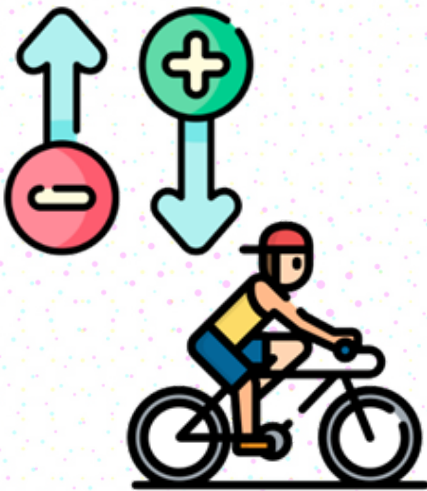
What work are we doing in your area?



MPS Newsletter – Sutton Schools Team

Welcome to the September newsletter! As we all head back to school, your local schools team want to tell you what the police have been up to over your summer, and whether our actions helped reduce crime. We also want to let you know what to expect over the next few months, and what you can do to help us keep you safe.

UPDATE: Crime in Sutton



- The last newsletter mentioned lots of police activity that was planned over the summer to prevent crime
- The tactics seemed to have worked, with our data showing there were less robberies in Sutton Town Centre over the summer
- The issues in the Wallington area also seemed to have stopped, with a suspect caught and charged with multiple robberies
- BUT data suggests bike thefts will likely increase over the next few weeks, along with robbery
- Bike thefts are currently happening around the high street and Rosehill Park area, and robberies will likely happen near the town centre

What are we doing to stop this?

Bike Theft

- Specialist crime analysts are looking at this problem to potentially find out who is committing these crimes
- The problem is being raised at specialist meetings to senior leaders to explore different intervention opportunities
- Local teams will be going to key areas to find suspects and provide crime prevention advice to the local community



What are we doing to stop this?

Robbery.



- When travelling, try to put your phone away, especially when you're near a tube/train station, and on your way home from school, as this is when you're most at risk
- If possible, try not to have the latest phone as this can make you a target

What can I do to keep Safe?

Robbery.



- When travelling, try to put your phone away, especially when you're near a tube/train station, and on your way home from school, as this is when you're most at risk
- If possible, try not to have the latest phone as this can make you a target

Bike Theft



- When locking up your bike, make sure you lock the frame and wheel to the post, not just the wheel. You can also use 2 different locks for both wheels on your bike to make it more secure
- Try to leave your bike in a well-lit area if possible, (and that is very busy), so thieves don't target that area
- Try not to leave too big of a gap between the lock and the bike frame so it is difficult to cut/take off

What should I do if I see/hear something that worries me?



1. **Speak to a teacher** – If you are feeling unsafe, or are unsure about anything, speak to a trusted teacher who can help you decide what to do next
2. **Schools officers** – If you feel comfortable to do so, speak to your local schools officer about anything that concerns you and they will do their best to help
3. **Anonymously Report** – If you are worried about something and want to report it, but you don't want anyone to know it was you who said something, you can send a message on Fearless. It is a youth charity that does not take any details, so it will pass the information onto the police **completely anonymously**.